



Agenda Key:23MA
Session Number:470182

DB2 for IBM i Database Modernization: Object Creation and Access

Tom Mckinley (Mac2@us.ibm.com)
Lab Services
IBM Rochester

© Copyright IBM Corporation, 2009. All Rights Reserved.
This publication may refer to products that are not currently
available in your country. IBM makes no commitment to make
available any products referred to herein.

Agenda

- Why modernize with SQL & DB2?
- Approaches & Options
- Modernizing Database Definitions
- Modernizing Data Access
- Next Steps

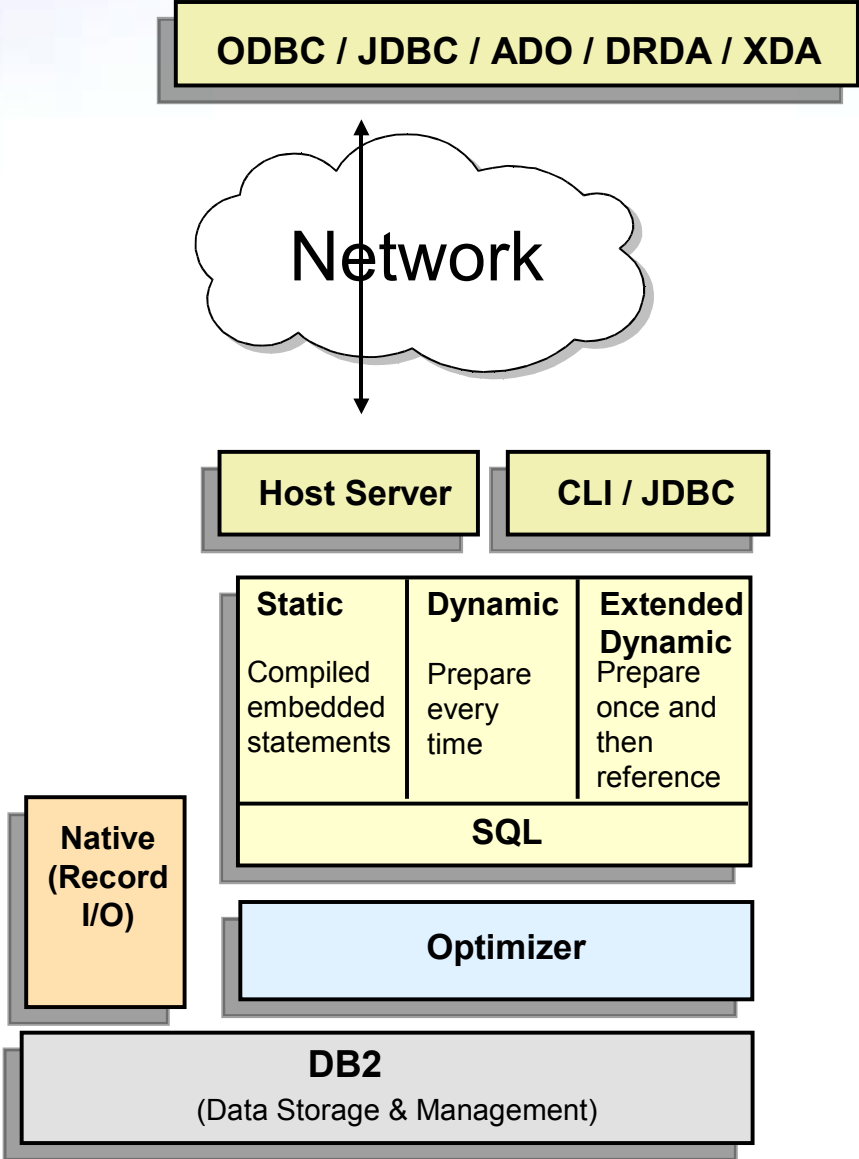
THE NEW POWER EQUATION

Why SQL?

- Portability of code & skills
- Strategic database interface for industry & i5/OS
 - Faster performance delivered by SQE only available to SQL-based interfaces
 - SQL required for certain functions & middleware
 - J2EE architecture based on SQL interfaces
 - Data types: BLOB, CLOB, Datalink, ...
 - Auto-Incrementing Constructs: Sequence & Identity column attribute
 - Column-level Triggers
 - Encryption & Decryption functions
 - Encoded Vector Indices
 - ...
- Enables better positioning of System i as a Database Server
- SQL as a programming language can reduce total lines of code
- DB2 SMP - parallel database processing

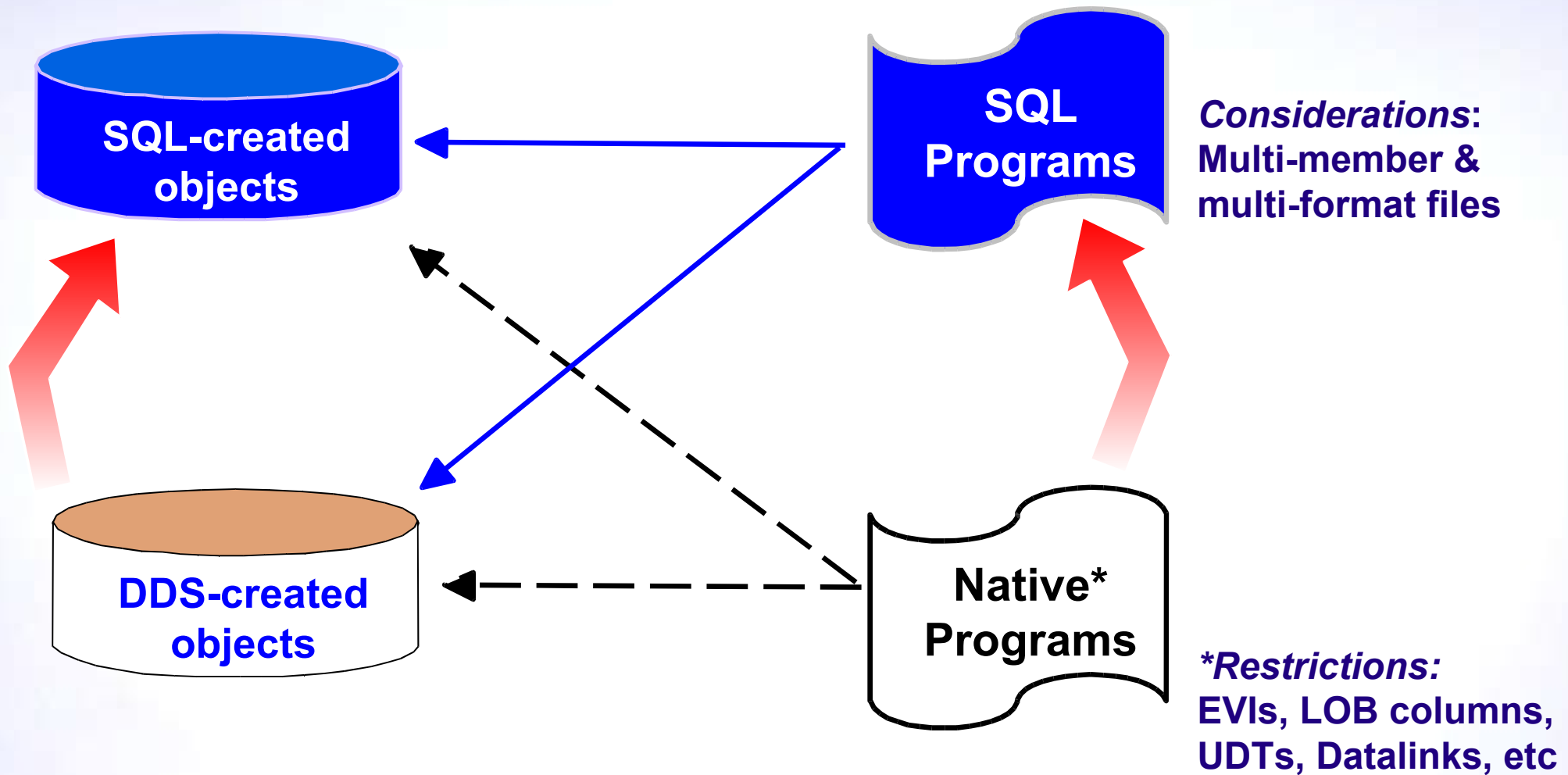
THE NEW POWER EQUATION

Approaches & Options



THE NEW POWER EQUATION

Approaches & Options



THE NEW POWER EQUATION

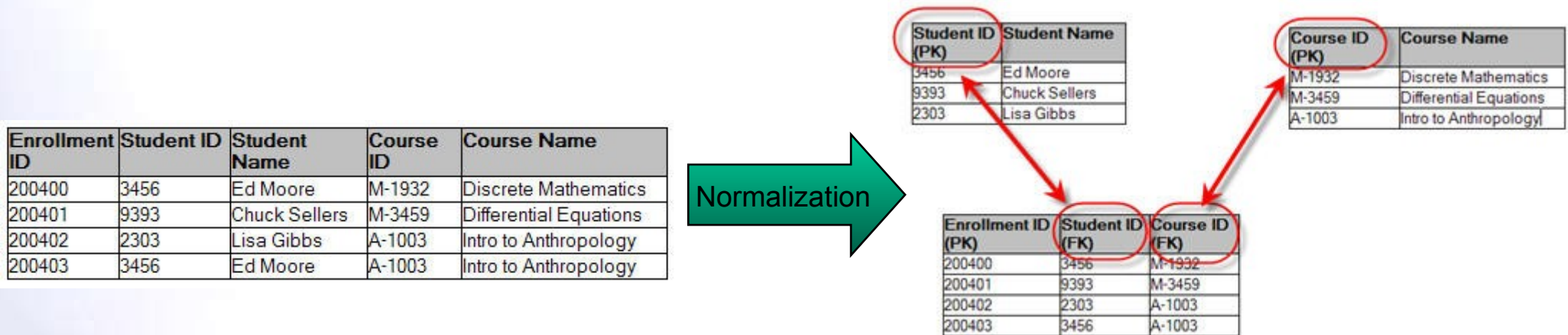
Modernizing Definitions & Objects

- Modeling
- Terminology
- Moving from DDS to SQL DDL
- SQL object management
- Embedding business logic into database definitions

Modernizing Definitions & Objects

Data modeling

- “Master data” concept
 - Services created to retrieve data – what if multiple copies exist?
- Database normalization
 - Define a separate table for each related set of values
 - Define the primary key (surrogate or natural)
 - Eliminate redundant data
 - Fifth normal form (5NF) recommended, 3NF at minimum
 - Establish RI constraints
- Also consider
 - Globalization

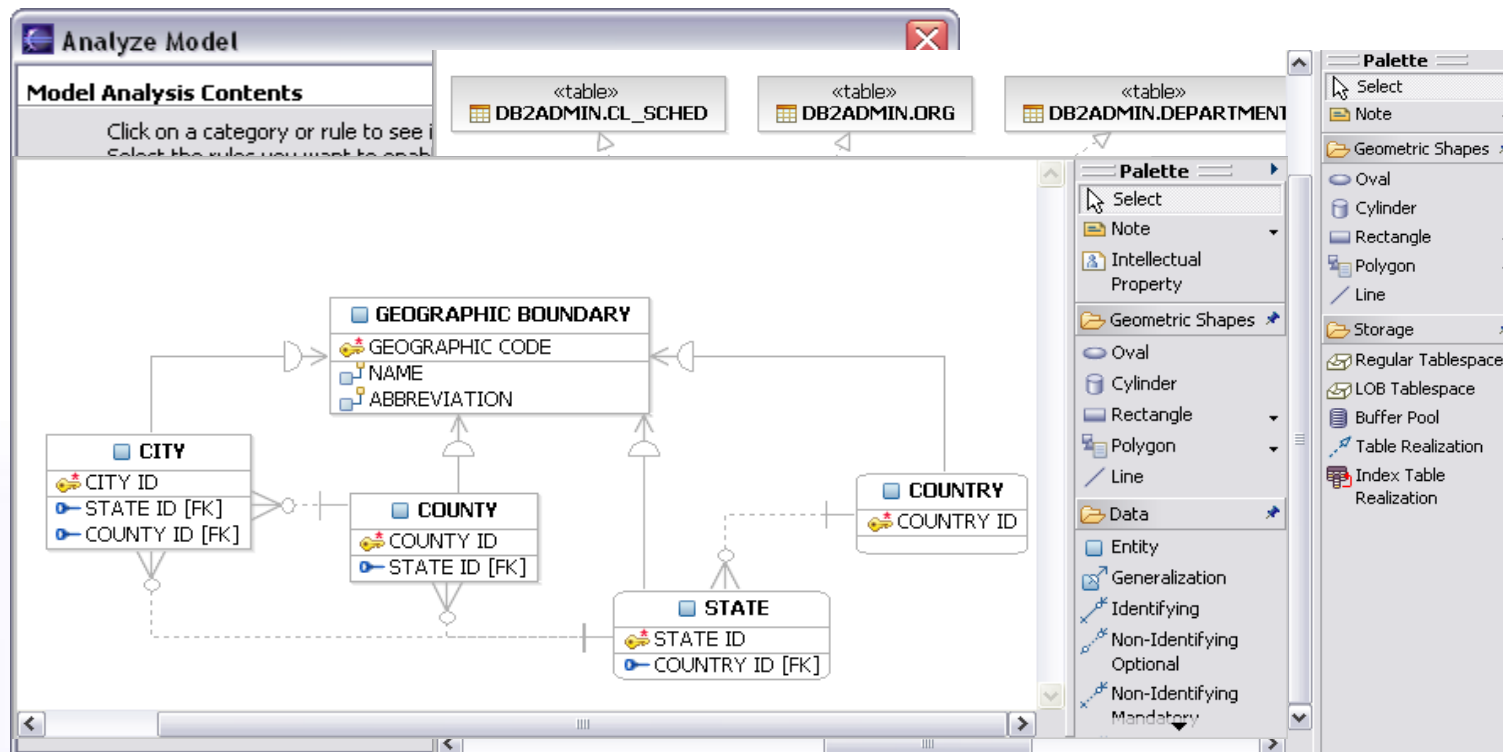


THE NEW POWER EQUATION

Modernizing Definitions & Objects

Data Modeling IBM Rational Data Architect (Version 7)

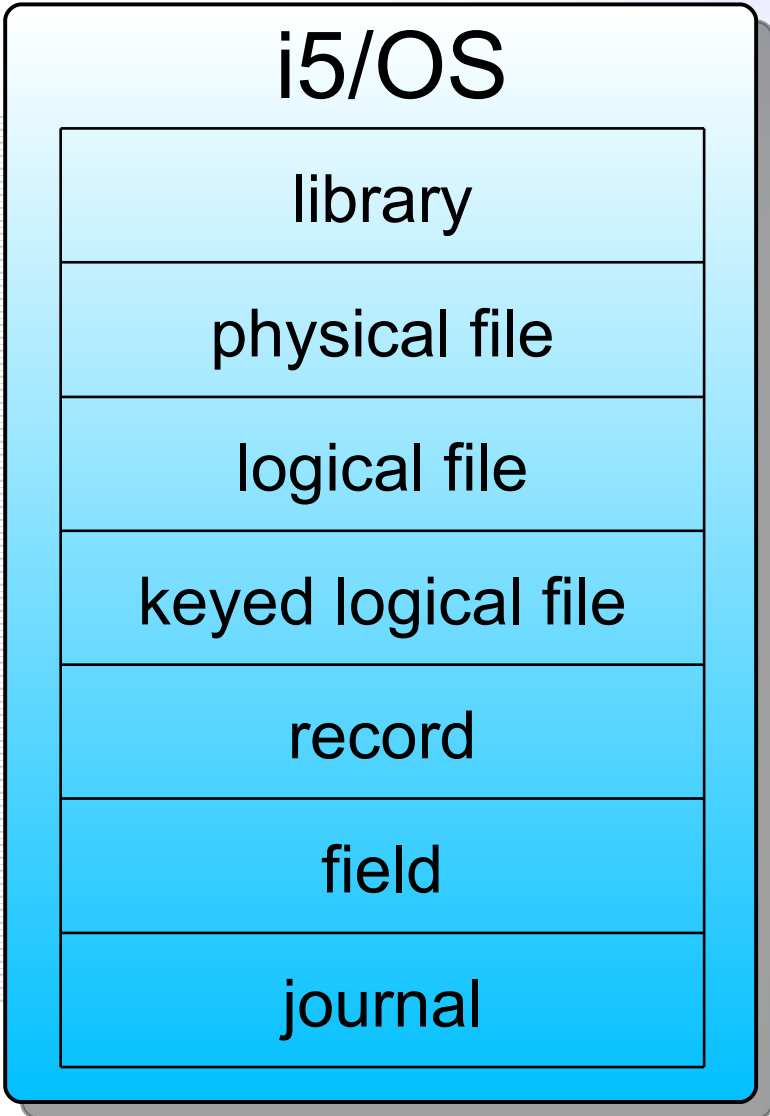
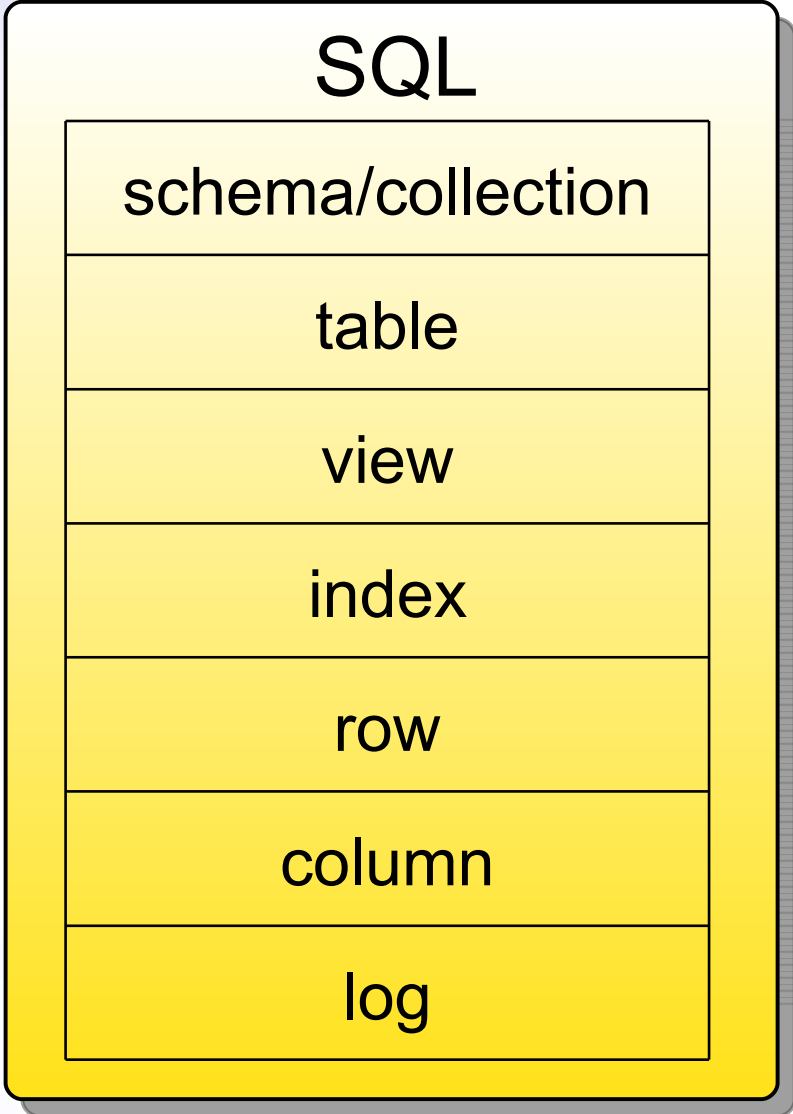
- Enterprise data modeling and management
 - Compare & synchronize
 - Forward & reverse engineering
 - Logical file support – Fixpack 003
 - Model analyzer for enterprise standard conformance
- Database development – SQL Stored Procedures and Function
- Trial Download: ibm.com/software/data/integration/rda/



THE NEW POWER EQUATION

Modernizing Database Objects

Terminology



THE NEW POWER EQUATION

Modernizing Database Definitions & Objects

Tables vs PFs

- SQL Tables compared with Physical Files
 - **Advantages**
 - More data types
 - Constraint definitions can be included in object source
 - Faster reads
 - Longer, more descriptive column names
 - Data Modeling Tool support
 - DB2 attempts to automatically journal tables
 - **Disadvantages**
 - Slower writes
 - No DDM, BUT SQL can utilize DRDA connections
 - Multi-member files
 - SQL ALIAS provides solution:
CREATE ALIAS JanSales FOR SALES (JANUARY)

THE NEW POWER EQUATION

Modernizing Database Definitions & Objects

Indexes vs LFs

- SQL Indexes compared with Keyed Logical Files
 - Advantages
 - Encoded Vector Index Structure
 - 64K Logical Page Size (since V4R2) – more aggressive input
 - Disadvantages
 - 8K Logical Page Size – less aggressive input
 - No support for Select/Omit filtering or join logical files
 - **V6R1** provides new syntax to allow the creation of SQL indexes with selection criteria and derivations

THE NEW POWER EQUATION

V6R1 – SQL Derived Index Example

DDS for Existing Select/Omit LF:

```
A          R ITEM_FACT          PFILE (ITEM_FACT)
```

```
A          ORDERKEY
```

```
A          SHIPMODE
```

```
A          PARTKEY
```

```
A          K ORDERKEY
```

```
A          K SHIPMODE
```

- **Equivalent SQL syntax:**

```
CREATE INDEXA S sql_selectomitSHIPMODE COMP (EQ 'MAIL')
```

```
ON item_fact ( orderkey, shipmode )
```

```
WHERE shipmode = 'MAIL'
```

```
RCDFMT item_fact ADD partkey
```

THE NEW POWER EQUATION

Modernizing Database Definitions & Objects

Views vs LFs

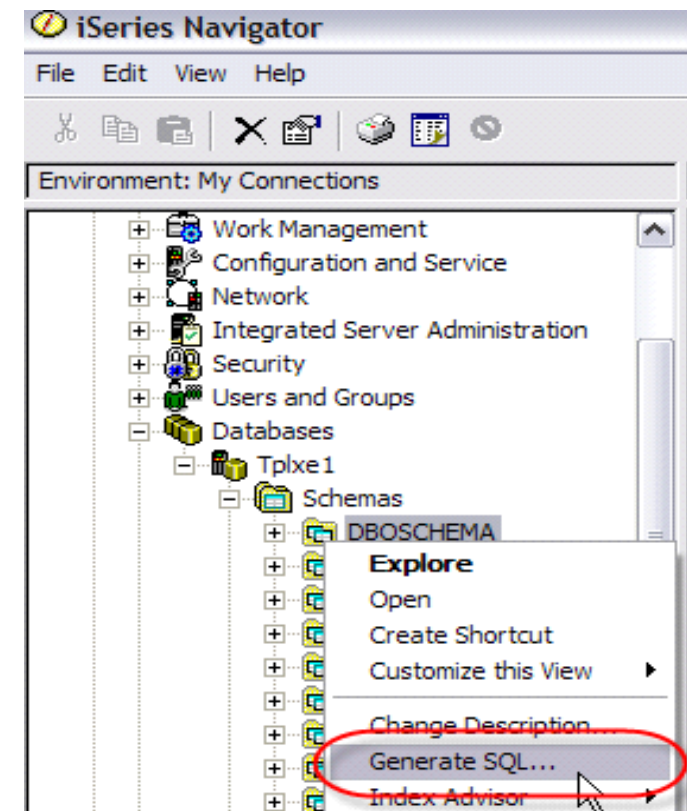
- SQL Views compared with Logical Files
 - Advantages
 - More flexibility in terms of selecting & processing data
 - CASE expressions & Date/Time functions
 - Grouping & more advanced Join processing
 - Can be used as logical files to enhance native functionality
 - Disadvantages
 - Views cannot be keyed/ordered
 - Does that mean SQL Views have slower performance?
- NO - assuming you have the right set of indexes/statistics in place for the query optimizer to use
- View is used by SQL just to transform data, query optimizer's job to find the best method to speed up selection or sorting
- Fastest method may not be a keyed access method

THE NEW POWER EQUATION

Modernizing Database Definitions & Objects

DDS to SQL Conversion

- System i Navigator Generate SQL Task (QSQGNDDL API)
 - Useful in converting object definitions from DDS to SQL
 - Supports physical & logical files
 - Not all DDS features can be converted, tool will convert as much as possible and generate warnings for unconvertible options (e.g., EDTCDE)
 - Logical files converted to SQL Views
 - SQL Field Reference File support not used
 - Can convert a single object or a group of objects
 - Output can be edited & saved directly into source file members



THE NEW POWER EQUATION

Modernizing Database Definitions & Objects

SQL Object Compatibility

- SQL Column & Object names have maximum lengths of 30 & 128, but many i5/OS utilities, commands and interfaces only support a 10-character length. How does that work?!?
 - System automatically generates a short 10 character name
 - First 5 chars with unique 5 digit number
CUSTOMER_MASTER >> CUSTO00001
- Might be different each time a specific table is created, depending on creation order and what other objects share the same 5 character prefix
- Use i5/OS SQL syntax to specify your own short name
 - RENAME TABLE (tables & views) & RENAME INDEX
 - FOR COLUMN clause for columns
 - SPECIFIC clause for procedures, functions

THE NEW POWER EQUATION

Modernizing Database Definitions & Objects

SQL Object Compatibility

- Short & Long Name Co-existence Example

- Specify the short name at creation:

```
CREATE TABLE dbtest/cusmst  
(customer_name FOR COLUMN cusnam CHAR(20),  
customer_city FOR COLUMN cuscty CHAR(40))
```

- Specify a long name for existing short-name:

```
RENAME TABLE dbtest/cusmst TO customer_master  
FOR SYSTEM NAME cusmst
```

- If long name specified on SQL Table definition, can also add/control the short name after table created:

```
RENAME TABLE dbtest/customer_master TO SYSTEM NAME cusmst
```


Modernizing Database Definitions & Objects

SQL Object Compatibility

- RENAME statement can also be used to control the format & file name used by native programs
 - ▶ Specify the format name (cmfmt) when creating the table
CREATE TABLE dbtest/cmfmt
(customer_name FOR COLUMN cusnam CHAR(20),
customer_city FOR COLUMN cuscty CHAR(40))
 - ▶ Use RENAME to specify the short file name (cusmst) for table:
RENAME TABLE dbtest/cmfmt **TO** cusmst
 - ▶ Use RENAME to specify the long name for SQL interfaces
RENAME TABLE dbtest/cusmst **TO** customer_master
FOR SYSTEM NAME cusmst
- ▶ V5R4 simplifies control of the record format name with new SQL keyword...

```
CREATE TABLE dbtest/customer_master  
(customer_name FOR COLUMN cusnam CHAR(20),  
customer_city FOR COLUMN cuscty CHAR(40)) RCDFMT cmfmt
```

THE NEW POWER EQUATION

Modernizing Database Definitions & Objects

SQL Object Compatibility

- What happens to my existing applications if my objects are now created with SQL instead of DDS?

IT DEPENDS on your approach!

THE NEW POWER EQUATION

Modernizing Database Definitions & Objects

SQL Object Management

- SQL Source Management best practices:
 - Store SQL source in source physical file members just like DDS and “execute” with the RUNSQLSTM instead of CRTPF/CRTLF
 - Store SQL scripts in PC or IFS files for non-i5/OS change management tools
 - Generate SQL can be used to retrieve misplaced SQL source from System Catalogs (SYSIBM & QSYS2)
 - **V6R1** RUNSQLSTM supports IFS files and wider margins & CL commands
 - SQL Table definitions can use Field Reference File
CREATE TABLE customer AS
(SELECT id cust_id, lname cust_lastname, fname cust_firstname,
city cust_city FROM RefFile)
WITH NO DATA
- May need to adjust process for moving from development to production
 - Best practice is to re-execute SQL creation script
 - Save/Restore process for SQL databases documented at:
ibm.com/developerworks/db2/library/techarticle/0305milligan/0305milligan.html

THE NEW POWER EQUATION

Modernizing Definitions & Objects

SQL & Non-relational data

- User-Defined Table Functions

- Allows non-relational & legacy data to be virtualized as an SQL table

```
SELECT * FROM TABLE(myudtf('Part XYZ'))
```

- Both SQL & External Table Functions supported
 - External UDTFs can be easily written to access multi-format files, S/36 files, and stream files
 - Table functions can only be invoked from SQL-based interfaces

- Datalinks

- URL-based data type to provide linkage to related objects in IFS
- Can establish RI relationship between table row & IFS object

- LOBs

- Allows you to keep non-relational data along with all the other business data

THE NEW POWER EQUATION

Modernizing Definitions & Objects

Moving Business Logic into DB2 - Automatic Key Generation

- Identity Column Attribute

- Attribute that can be added to any numeric columns to have DB2 generate next value
- Not guaranteed to be unique, primary key or unique index must be defined
- Only available for SQL tables, BUT identity column value generated for both SQL and non-SQL interfaces (RPG, etc) that are adding new rows

```
CREATE TABLE emp( empno INTEGER GENERATED ALWAYS AS IDENTITY
                    (START WITH 10 , INCREMENT BY 10),
                    name CHAR(30), dept# CHAR(4))
```

```
INSERT INTO employee(name,dept) VALUES('MIKE','503A') or...
INSERT INTO employee VALUES(DEFAULT,'MIKE', '503A')
```

- Sequence Object

- Separate object that can be shared across multiple tables
- Generated value to be part of non-numeric keys

```
CREATE SEQUENCE order_seq START WITH 10 INCREMENT BY 10
```

```
INSERT INTO orders(ordnum,custnum)
                    VALUES( NEXT VALUE FOR order_seq, 123 )
```

THE NEW POWER EQUATION

Modernizing Definitions & Objects

Moving Business Logic into DB2 - Constraints

- Database Constraints Benefits
 - Easier code reuse & better modularity
 - Improved data integrity
 - Improved query performance - SQE query optimizer is constraint aware
- Constraint Types
 - Primary & Unique Key
 - Referential Integrity Constraints
 - Enforce Parent/Child & Master/Detail relationships
 - Check Constraints
 - Ensure that a column is only assigned legal values

```
CREATE TABLE orders(  
  ordnum INTEGER PRIMARY KEY,  
  ordqty INTEGER CHECK(ordqty>0 AND ordqty<999),  
  ordamt DECIMAL(7,2),  
  part_id CHAR(4),  
  CONSTRAINT ordpart FOREIGN KEY(part_id) REFERENCES parts(PartID)  
  ON DELETE RESTRICT ON UPDATE RESTRICT )
```

THE NEW POWER EQUATION

Modernizing Definitions & Objects

Moving Business Logic into DB2 - Triggers

- Triggers allow you initiate business policies & processes whenever new data comes in or existing data is changed
 - DB2 responsible for always invoking the trigger program
 - Execution independent of the user interface
 - Transform data before it gets into DB2
- DB2 for i Trigger Support
 - Before & After: Insert, Update, & Delete events (up to 300 triggers)
 - SQL & External(ADDPFTRG) Triggers
 - Column-level & Statement-level triggers only available with SQL Triggers

```
CREATE TRIGGER audit_salary
AFTER UPDATE ON employee(salary)
REFERENCING NEW AS n
REFERENCING OLD AS o
FOR EACH ROW
WHEN (n.salary - o.salary >= 5000)
INSERT INTO audit
VALUES(n.empno, n.deptno, n.salary,current timestamp)
```

THE NEW POWER EQUATION

Modernizing Data Access

- Programming Interfaces
- Native I/O to SQL Comparison
- Using SQL to Reuse & Repurpose Existing Code
- DB2 & New Application Models
- Tools

THE NEW POWER EQUATION

Modernizing Data Access

Programming Interfaces

Static SQL

Embedded Static

Dynamic SQL

Embedded
Dynamic

JDBC, SQLJ

OLE DB, .NET

CLI, ODBC

PHP ibm_db2

RUNSQLSTM

Extended Dynamic SQL

QSQPRCED

Toolbox JDBC &
iSeries Access
ODBC

XDA API set

****DB2 SQL Development Kit only required if embedded SQL (& STRSQL) is going to be used**

THE NEW POWER EQUATION

Modernizing Data Access

Native I/O to SQL Example

```

...
C/EXEC SQL
C+ DECLARE sql_jn CURSOR FOR SELECT
C+  t.year,t.month,i.orderdt,c.country,c.cust
C+  p.part,s.supplier,i.quantity,i.revenue
C+ FROM item_fact i
C+ INNER JOIN part_dim p ON (i.partid =p.partid)
C+ INNER JOIN time_dim t ON (i.orderdt=t.datekey)
C+ INNER JOIN cust_dim c ON (i.custid=c.custid)
C+ INNER JOIN supp_dim s ON (i.suppdt=s.suppdt)
C+ WHERE year=1998 AND month=6
C/END-EXEC

C/EXEC SQL
C+ OPEN sql_jn
C/END-EXEC

C/EXEC SQL
C+ FETCH NEXT FROM sql_jn FOR :RowsReq ROWS
C+ INTO :result_set
C/END-EXEC
C      If      SQLCOD = 0 and
C              SQLER5 = 100 and
C              SQLER3 > 0
C      Eval      RowsRd = SQLER3
...

```

```

C      SearchKey      KList
C                    Kfld      SearchYear
C                    Kfld      SearchMonth
...
C      Times          Occur
C      SearchKey      Setll     TIME_DIML1
C                    If        %FOUND
C                    DOU       RowsReq = Rows Rd
C                    READ      TIME_DIML1
C                    If        %EOF
C                    Leave
C                    Endif
C      DATEKEY        Setll     ITEMFACTL1
C                    If        %FOUND
C                    DOU       RowsReq = RowsRd
C      DATEKEY        READE    ITEMFACTL1
C                    If        %EOF
C                    Leave
C                    Endif
C      PARTKEY        CHAIN     PART_DIML1
C                    If        Not %FOUND
C                    Iter
C                    Endif
C      CUSTKEY        CHAIN     CUST_DIML1
C                    If        Not %FOUND
C                    Iter
C                    Endif
C      SUPPKEY        CHAIN     SUPP_DIML1
C                    If        Not %FOUND
C                    Iter
C                    Endif ...

```

THE NEW POWER EQUATION

Modernizing Data Access

Native I/O to SQL Example - Joined LFs & Views

```

...
C/EXEC SQL
C+ DECLARE sql_jn CURSOR FOR
C+   SELECT * FROM JoinView
C+   WHERE year=1998 AND month=6
C/END-EXEC

C/EXEC SQL
C+ OPEN sql_jn
C/END-EXEC

C/EXEC SQL
C+ FETCH NEXT FROM sql_jn FOR
C+   :RowsReq ROWS INTO :result_set
C/END-EXEC

C           If          SQLCOD = 0 and
C           SQLER5 = 100 and
C           SQLER3 > 0
C           Eval      RowsRd = SQLER3

```

```

..
C   SearchKey   KList
C               Kfld       SearchYear
C               Kfld       SearchMonth
...
C   SearchKey   Setll       NTVJOIN002
C               If          %FOUND
C               DO         RowsReq Times
C   Times              Occur       Result_Set
C               READ       NTVJOIN002
C               If          %EOF
C               Leave
C               Endif

C               Eval       RowsRd = RowsRd + 1
C               ENDDO

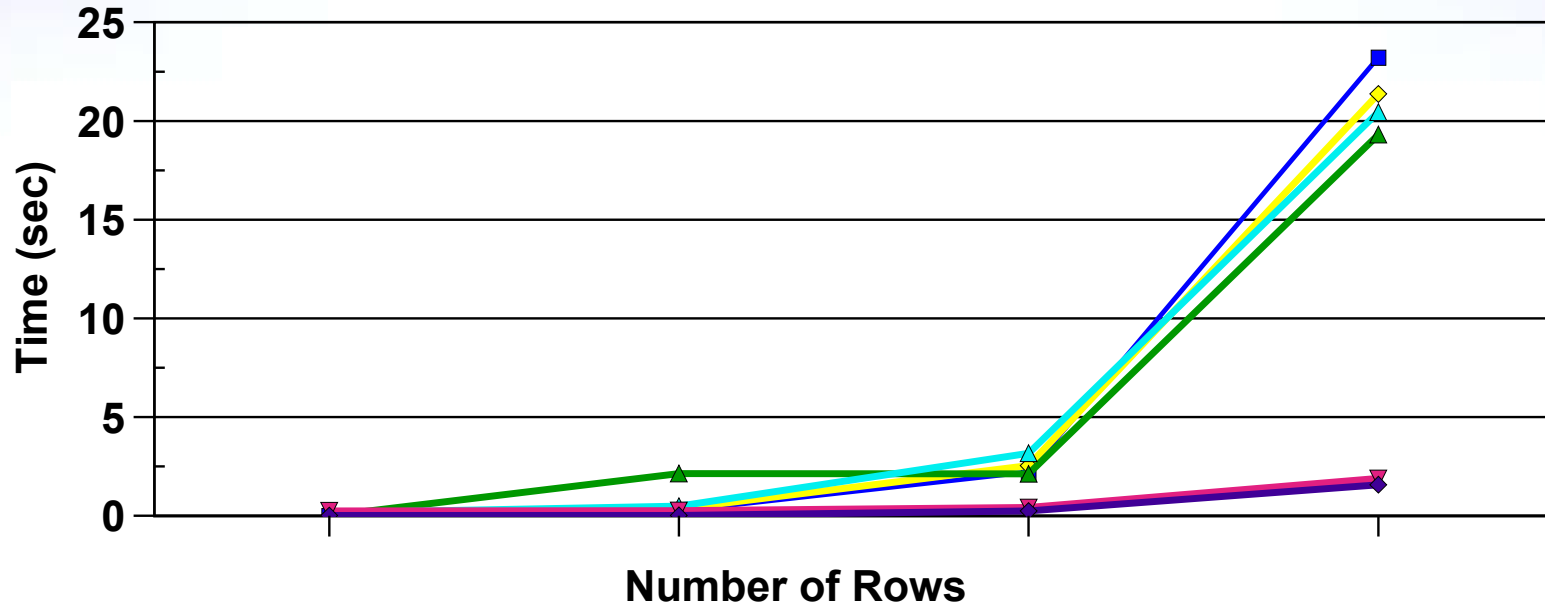
C               Endif

```

THE NEW POWER EQUATION

Modernizing Data Access

Native I/O to SQL Example - Performance Comparison



Note: Tests run on Model 720 w/1600 CPW & 2 GB Memory - your performance results may vary

	1	100	1000	10000
■ Native File Join	0.002512	0.260248	2.219504	23.228176
◆ Native JoinLF	0.002304	0.362128	2.544608	21.366480
▲ Native JoinLF w	0.002400	2.144288	2.125032	19.311464
▲ SQL - No IOA	0.145160	0.489136	3.166704	20.452984
▼ SQL IOA	0.251168	0.267208	0.417800	1.898800
◆ SQL SQE IOA	0.013536	0.019320	0.250160	1.576536

THE NEW POWER EQUATION

Modernizing Data Access

Native to SQL Considerations

- ORDER BY clause is the **only way** to guarantee the sequencing of results when using SQL - no clause, means ordering by chance
- SQL Precompilers do not support all the latest features (free format SQL supported added in V5R4) - still missing from RPG Precompiler in V6R1:
 - Support for properly scoping a local variable in a subprocedure as a host variable in an SQL statement (ie, multi-pass) **THIS WAS FIXED IN V6R1**
 - Support for qualified names with more than one level of qualification
- Consider impact of SQL isolation level & journaling on native applications
- Critical Performance Success Factors
 - Sound Indexing & Statistics Strategy (ibm.com/servers/enable/site/education/ibo/record.html?indxng)
 - Reusable Open Data Paths (ODPs)
 - Prepare Once, Execute Many
 - Connection Pooling
 - Keep Connections & Jobs active as long as possible
 - Reference: ibm.com/servers/enable/site/education/abstracts/db2sql_abs.html
 - Blocked Fetches & Inserts
 - AVOID IMPLEMENTING THE RECORD AT A TIME PROCESSING IN SQL

THE NEW POWER EQUATION

Modernizing Data Access

Using SQL to Reuse & Repurpose Existing Code

- Stored Procedures, Functions, & Triggers provide vehicle for improving and changing the architecture of your solution
 - Improved modularity by allowing same code to be used by multiple interfaces & applications
 - Better partitioning of logic (eg, separation of presentation & database logic)
 - Easy transition to multi-tier architectures since many interfaces exist for remote invocations
- DB2 for i support provides maximum flexibility by supporting both SQL & External types
 - External support allows reuse of existing i5/OS application code & skills
 - SQL Procedural Language (PSM) enables better portability of logic (& programming skills) to/from other platforms
 - Data security can be enhanced/maintained with i5/OS Adopted Authority

THE NEW POWER EQUATION

Modernizing Data Access

Using SQL to Reuse & Repurpose Existing Code: User-Defined Functions

- UDFs allow the database to invoke user-written functions during the processing of an SQL statement
 - Allows you to customize SQL to meet your business requirements
 - Example:

```
CREATE FUNCTION Euro(EuroAmt DECIMAL(11,2))
  RETURNS DECIMAL(11,2)
  LANGUAGE SQL
  BEGIN
    DECLARE rate DECIMAL(9,5);

    SELECT conversion_rate INTO rate FROM ratetable WHERE ...;
    RETURN rate*EuroAmt;
  END
```

```
SELECT item_name, Euro(item_name) FROM parts...
```

THE NEW POWER EQUATION

Modernizing Data Access

Using SQL to Modernize Reporting

- Query/400 → DB2 Web Query
 - Browser interface
 - Multiple output options:
 - Excel, HTML, PDF, etc
 - Better performance with SQL-based reporting
 - Existing Query/400 reports can be imported
 - Web Query output capabilities can be applied to Query/400 results
 - Web Query input parameters can be added
- OPNQRYPF → SQL
 - Retain “set at a time processing” but provide data using SQL
 - White paper on conversion considerations:
 - ibm.com/partnerworld/wps/whitepaper/i5os/OPNQRYPF_SQL/move

Product Rev for United States

COUNTRY	Product Type	Line Total	# of Orders
United States	Video	\$386,699,009.00	5103
	Camcorders	\$325,874,360.00	4344
	Audio	\$284,659,563.00	10883
	Cameras	\$139,270,463.00	4488
	Office	\$22,538,102.00	2486

Top 3 Salesreps

Rank	Sales Rep	Line Total
1	Web	\$130,778,087.00
2	Anil Kristensen	\$50,379,924.00
3	Ejorn Danielson	\$49,906,101.00

THE NEW POWER EQUATION

Modernizing Data Access

DB2 & New Application Models - XML & Text Mining

- DB2 Extenders provide low-level plumbing to allow you to concentrate on the business logic
- DB2 & XML Integration with DB2 XML Extender
 - Allows an XML document to be stored & retrieved from a column
 - Enables XML document to be generated dynamically from existing DB2 data
 - Provides ability to decompose an XML document & generate new rows in your database
 - Redbooks: The Ins and Outs of XML and DB2 for i5/OS
<http://www.redbooks.ibm.com/abstracts/sg247258.html?Open>
- Text Mining with DB2 Text Extender & **IBM OmniFind – V6R1**
 - High-speed, sophisticated searches for any character columns
 - Fuzzy searches
 - Search on tenses of word
 - Customize search to words in same sentence or paragraph
 - Can also search text documents stored in IFS
- More Extender details at:
ibm.com/servers/enable/site/education/ibo/record.html?db2udbext

THE NEW POWER EQUATION

Modernizing Data Access

“SQL” Development Tools

- WebSphere Development Studio Client & Rational Developer for System i
 - DB2 Web Service Support
 - XML Extender Aids
 - Enhanced SQL Integration in 7.0 and 7.1 Clients
- Microsoft Visual Studio .NET Integration with **V6R1** ADO.NET Provider
- DB2 Developer Workbench (DB2 Data Studio)
 - Stored Procedures
 - User-Defined Functions
 - SOA Wizards
 - Java pureQuery runtimes
- Toolbox Graphical Debugger for ILE & SQL-source level debug (ibm.com/servers/enable/site/education/abstracts/sqldebug_abs.html)
- XCase for System i – Support for DDS to SQL Migration & Data Modeling

THE NEW POWER EQUATION

“SQL” Development Tool Example

- SQL syntax highlighting for both Free and Fixed Format ILE RPG
 - Websphere Development Studio Client 7.0 & Rational Developer for System i 7.1

```

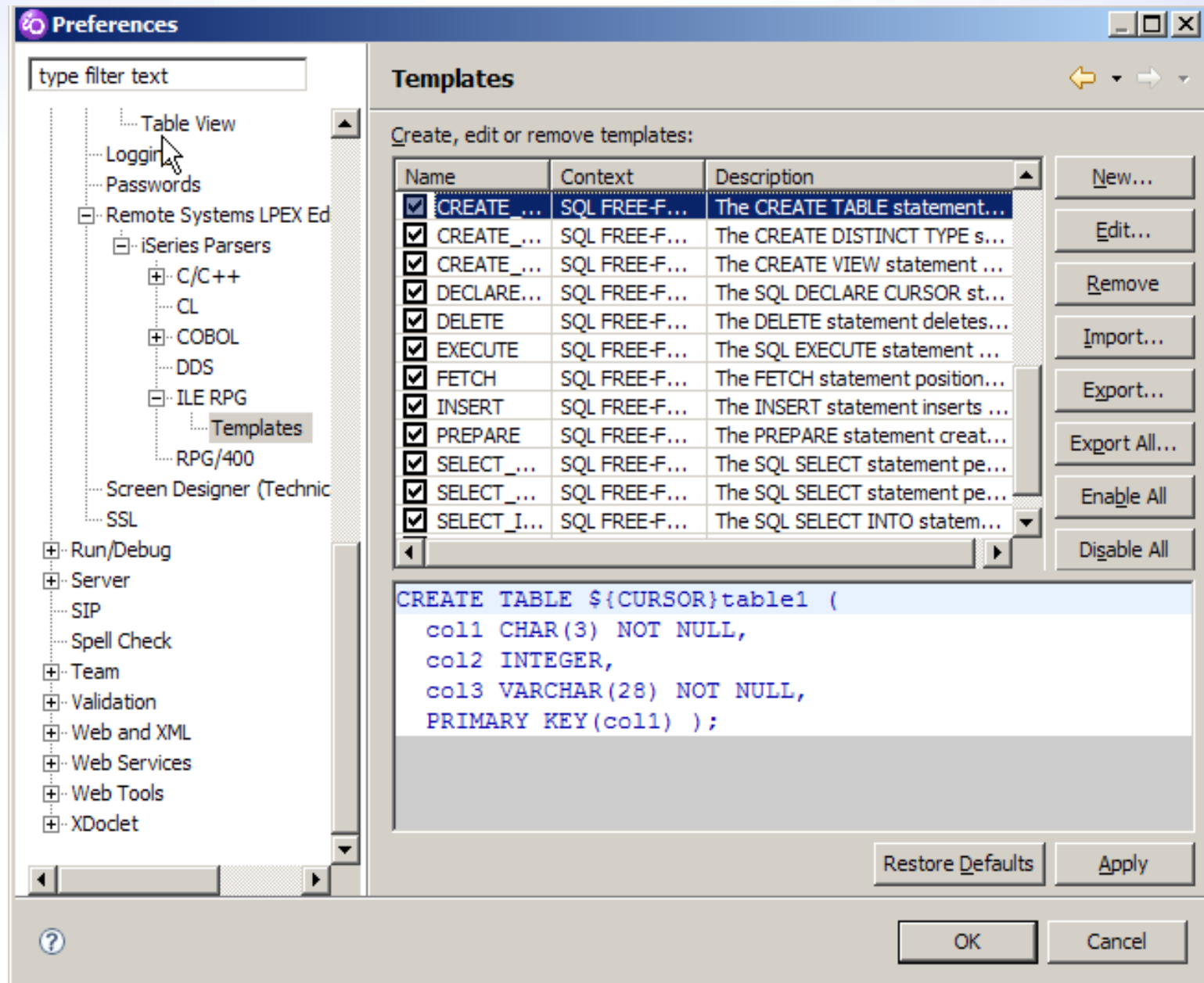
000100      /free
000200          exec sql create procedure median_result_set
000300          language sql dynamic result sets 1
000400              BEGIN
000500                  case v_workdept when 'B01'
000600                      -- comments
000700                      then update department set deptname = 'DATA ACCESS 2';
000800                      else update department set deptname = 'DATA ACCESS 3';
000900                      end case;
001000              end;
001100      /end-free

001500      C/EXEC SQL
001600 11 C+  DECLARE C2 CURSOR FOR
001700      C+  SELECT EMPPROJECT.PROJNO, PROJNAME, COUNT (*),
001800      C+          SUM ( (DAYS (EMENDATE) - DAYS (EMSTDATE)) * EMPTIME *
001900      C+          DECIMAL ( (SALARY / :WRKDAY), 8, 2) )
002000      C+  FROM CORPDATA/EMPPROJECT, CORPDATA/PROJECT, CORPDATA/EMPLOYEE
002100      C+  WHERE EMPPROJECT.PROJNO = PROJECT.PROJNO AND
002200      C+          EMPPROJECT.EMPNO = EMPLOYEE.EMPNO AND
002300      C+          PRENDATE > :RDATE
002400      C+  GROUP BY EMPPROJECT.PROJNO, PROJNAME
002500      C+  ORDER BY 1
002600      C/END-EXEC

```

“SQL” Development Tool Example

- Customizable statement templates for ILE RPG Free format to accelerate SQL coding



THE NEW POWER EQUATION

Modernizing Data Access

“SQL” Development Tools

- IBM DB2 Web Query – ibm.com/systemi/db2/webquery
 - Redbook: [Getting Started with DB2 Web Query for System i \(SG24-7214\)](#)
- System i Navigator (iSeries Navigator)
 - Editors for procedure, functions, triggers
 - SQL statement wizard for INSERT, SELECT, UPDATE, DELETE
 - Downloadable Tutorials at:
ibm.com/servers/enable/site/education/ibo/view.html?oc#db2
 - OnDemand Performance Center
 - Visual Explain
 - SQL Performance Monitors
 - SQL Plan Cache
 - System-Wide Index Advisor
- DB2 SMP - licensed feature (IBM i Option 26)
- Websphere Federation Server for non-DB2 data access
ibm.com/servers/enable/site/education/ibo/record.html?hetdata

Next Steps

- EDUCATION
 - *Modernizing iSeries Application Data Access* Redbooks document www.redbooks.ibm.com/abstracts/sg246393.html?Open
 - *Case Study: Modernizing a DB2 for iSeries Application* white paper ibm.com/servers/enable/site/education/abstracts/9e5a_abs.html
 - DB2 for i5/OS SQL Performance Workshop
 - ibm.com/systemi/db2/db2performance.html
 - ibm.com/partnerworld/wps/training/i5OS/courses
 - Indexing & Stats Strategy White Paper ibm.com/servers/enable/site/education/ibo/record.html?indxng
 - Database modernization roadmaps
 - **Modernizing DB2 definitions and usage**
<http://www.developer.ibm.com/vic/hardware/myportal/develop/roadmap?roadMapId=appiniti>
 - **Modernizing data access with SQL**
<http://www.developer.ibm.com/vic/hardware/myportal/develop/roadmap?roadMapId=appinitj>
 - **Optimizing SQL performance**
<http://www.developer.ibm.com/vic/hardware/myportal/develop/roadmap?roadMapId=appinith>
- Identify First Project
 - Write a new function/program component using SQL
 - Rewrite an existing component using SQL (ie, reporting function)
 - Port SQL-based program to DB2 for i5/OS
 - Porting guides & conversion tools at: ibm.com/servers/enable/site/db2/porting.html
- Get Help
 - Lab Services Technology Center - ibm.com/systems/services/labservices/

THE NEW POWER EQUATION

Additional Information

- **DB2 for i5/OS Websites**
 - Homepage: ibm.com/systemi/db2
 - developerWorks Zone: ibm.com/developerworks/db2/products/db2i5OS
- **Newsgroups**
 - USENET: comp.sys.ibm.as400.misc, comp.databases.ibm-db2
 - System i Network SQL & DB2 Forum -
<http://systeminetwork.com/isnetforums/forumdisplay.php>
- **Education Resources - Classroom & Online**
 - http://ibm.com/systemi/db2/db2educ_m.html
 - <http://ibm.com/partnerworld/wps/training/i5OS/courses>
- **DB2 for i5/OS Publications**
 - Online Manuals: <http://ibm.com/systemi/db2/books.html>
 - Porting Help: <http://ibm.com/servers/enable/site/db2/porting.html>
 - DB2 for i5/OS Redbooks (<http://ibm.com/systemi/db2/relredbooks.html>)
 - Stored Procedures, Triggers, & User-Defined Functions on DB2 for iSeries (SG24-6503)
 - DB2 for AS/400 Object Relational Support (SG24-5409)
 - Advanced Functions & Administration on DB2 for iSeries (SG24-4249)
 - OnDemand SQL Performance Analysis ... in V5R4 (SG24-7326)
 - Preparing for and Tuning the SQL Query Engine on DB2 for i5/OS (SG24-6598)
 - SQL/400 Developer's Guide by Paul Conte & Mike Cravitz
 - <http://as400network.com/str/books/Uniquebook2.cfm?NextBook=183>

IBM DB2 for IBM i Consulting and Services

- ✓ Database modernization (**Look for an upcoming DB2 for i modernization workshop**)
- ✓ DB2 Web Query
- ✓ Database design, features and functions
- ✓ DB2 SQL performance analysis and tuning
- ✓ Data warehousing review and assessment
- ✓ DB2 for i education and training

Contact: Tom McKinley

mac2@us.ibm.com

IBM Systems and Technology Group

Rochester, MN USA



Trademarks and Disclaimers

© IBM Corporation 1994-2009. All rights reserved.

References in this document to IBM products or services do not imply that IBM intends to make them available in every country.

Trademarks of International Business Machines Corporation in the United States, other countries, or both can be found on the World Wide Web at <http://www.ibm.com/legal/copytrade.shtml>.

Adobe, Acrobat, PostScript and all Adobe-based trademarks are either registered trademarks or trademarks of Adobe Systems Incorporated in the United States, other countries, or both.

Intel, Intel logo, Intel Inside, Intel Inside logo, Intel Centrino, Intel Centrino logo, Celeron, Intel Xeon, Intel SpeedStep, Itanium, and Pentium are trademarks or registered trademarks of Intel Corporation or its subsidiaries in the United States and other countries.

Linux is a registered trademark of Linus Torvalds in the United States, other countries, or both.

Microsoft, Windows, Windows NT, and the Windows logo are trademarks of Microsoft Corporation in the United States, other countries, or both.

IT Infrastructure Library is a registered trademark of the Central Computer and Telecommunications Agency which is now part of the Office of Government Commerce.

ITIL is a registered trademark, and a registered community trademark of the Office of Government Commerce, and is registered in the U.S. Patent and Trademark Office.

UNIX is a registered trademark of The Open Group in the United States and other countries.

Cell Broadband Engine and Cell/B.E. are trademarks of Sony Computer Entertainment, Inc., in the United States, other countries, or both and are used under license therefrom.

Java and all Java-based trademarks are trademarks of Sun Microsystems, Inc. in the United States, other countries, or both.

Other company, product, or service names may be trademarks or service marks of others.

Information is provided "AS IS" without warranty of any kind.

The customer examples described are presented as illustrations of how those customers have used IBM products and the results they may have achieved. Actual environmental costs and performance characteristics may vary by customer.

Information concerning non-IBM products was obtained from a supplier of these products, published announcement material, or other publicly available sources and does not constitute an endorsement of such products by IBM. Sources for non-IBM list prices and performance numbers are taken from publicly available information, including vendor announcements and vendor worldwide homepages. IBM has not tested these products and cannot confirm the accuracy of performance, capability, or any other claims related to non-IBM products. Questions on the capability of non-IBM products should be addressed to the supplier of those products.

All statements regarding IBM future direction and intent are subject to change or withdrawal without notice, and represent goals and objectives only.

Some information addresses anticipated future capabilities. Such information is not intended as a definitive statement of a commitment to specific levels of performance, function or delivery schedules with respect to any future products. Such commitments are only made in IBM product announcements. The information is presented here to communicate IBM's current investment and development activities as a good faith effort to help with our customers' future planning.

Performance is based on measurements and projections using standard IBM benchmarks in a controlled environment. The actual throughput or performance that any user will experience will vary depending upon considerations such as the amount of multiprogramming in the user's job stream, the I/O configuration, the storage configuration, and the workload processed. Therefore, no assurance can be given that an individual user will achieve throughput or performance improvements equivalent to the ratios stated here.

Prices are suggested U.S. list prices and are subject to change without notice. Contact your IBM representative or Business Partner for the most current pricing in your geography.

THE NEW POWER EQUATION